

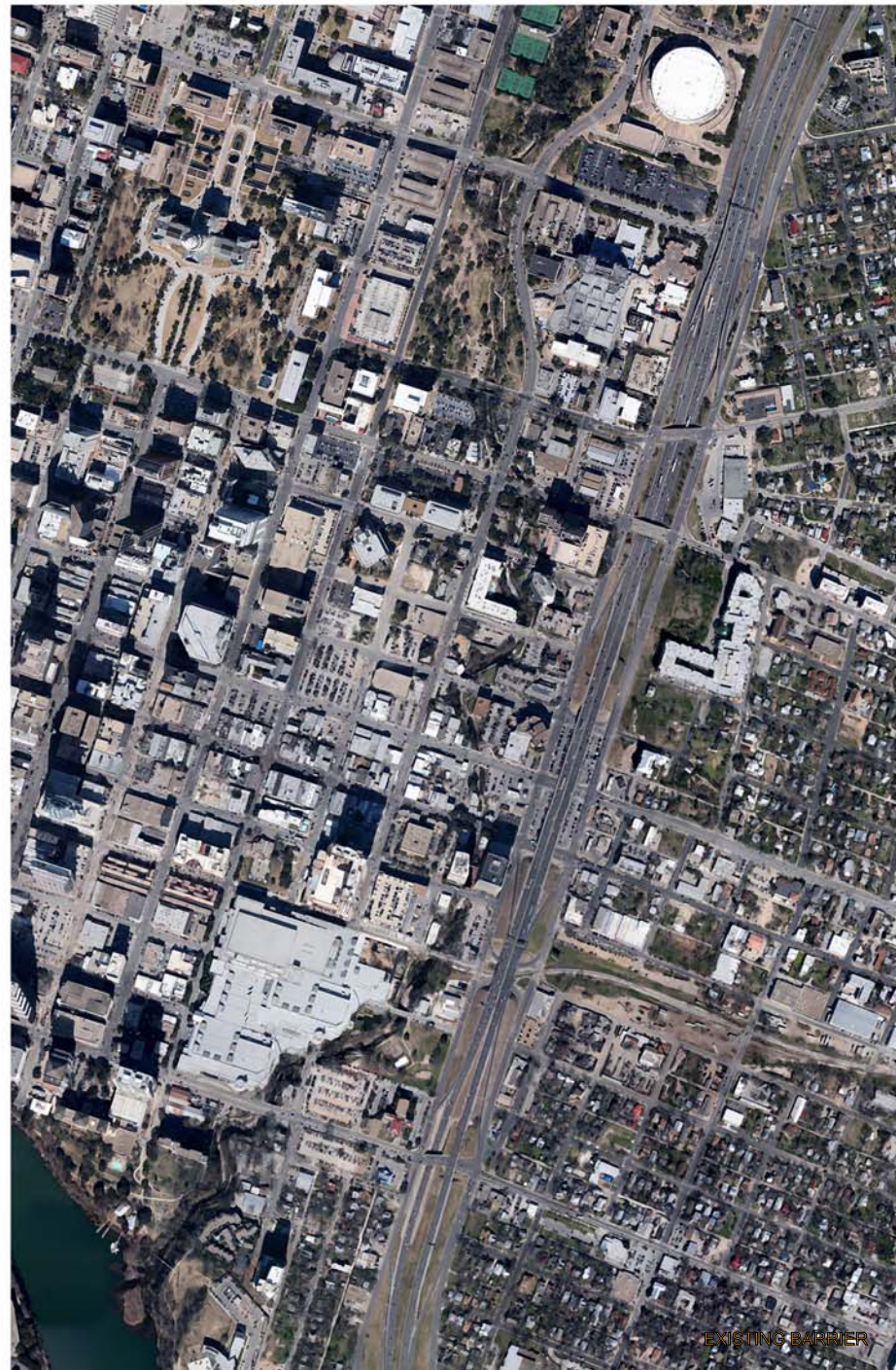


PHASE 1: CUT AND BRIDGE

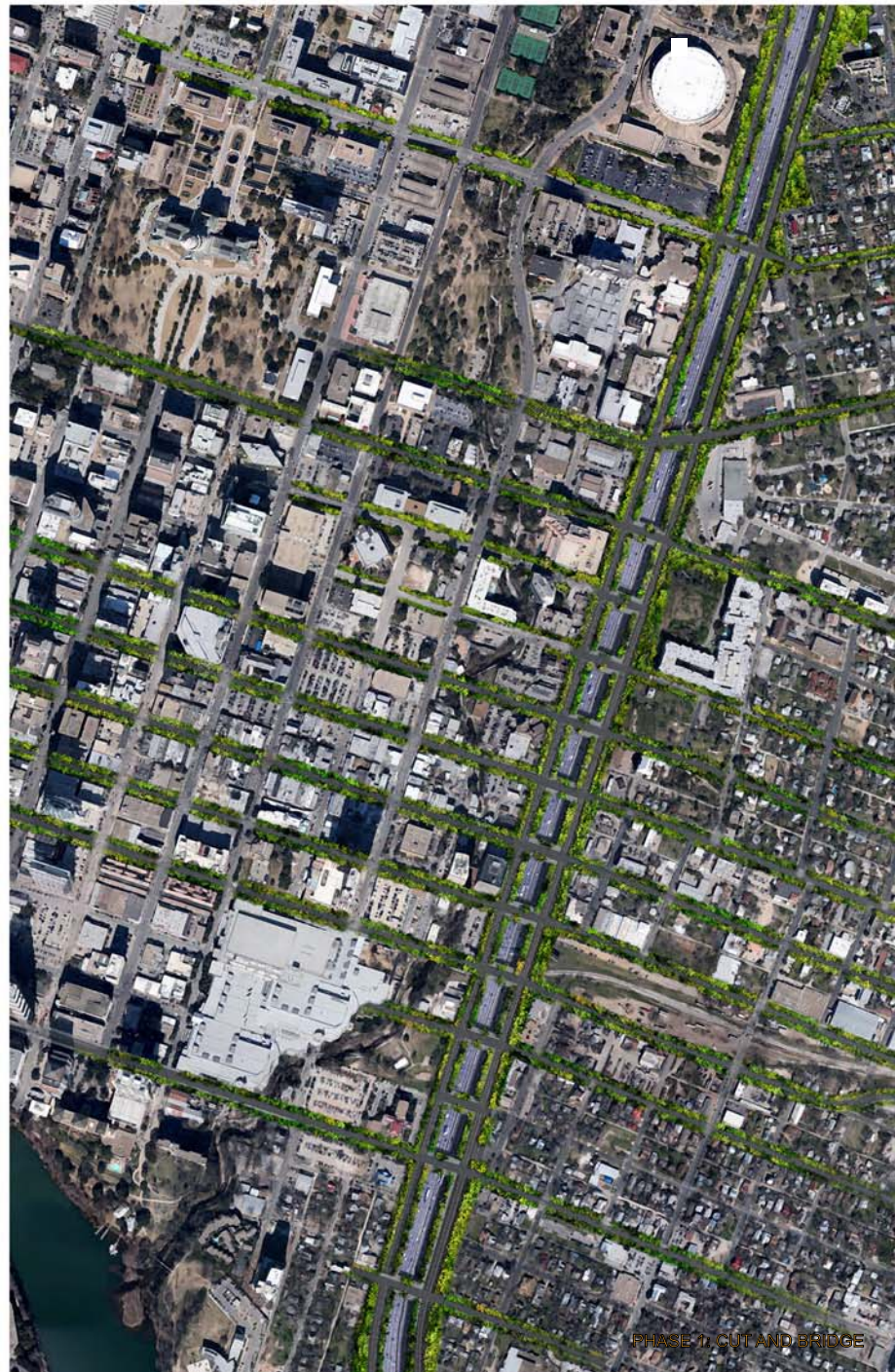
6TH STREET BRIDGE – The bridge would be built to Austin's Great Streets standards, with wide sidewalks, double rows of street trees, and significantly improved accessibility for all.



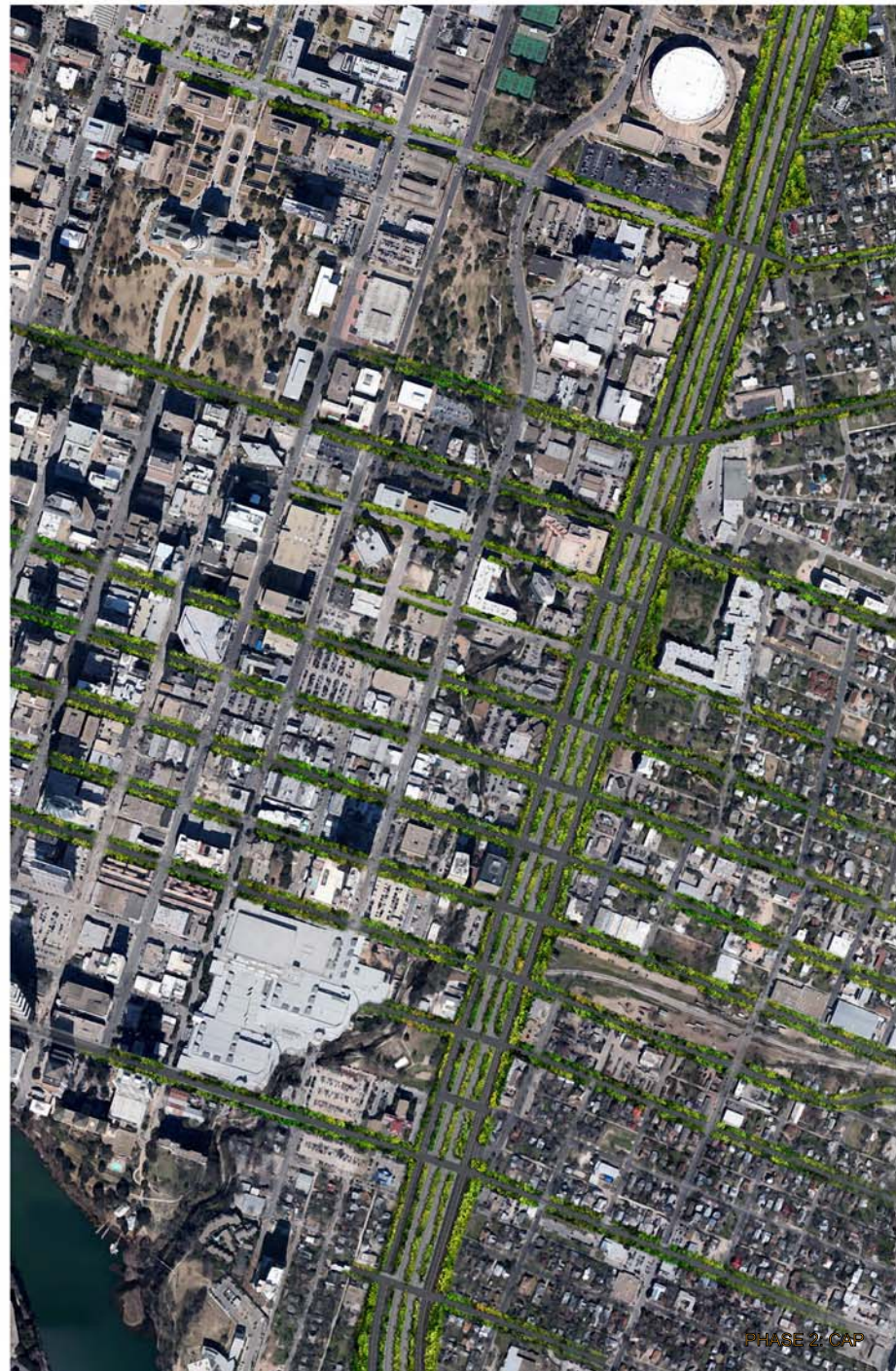
RECONNECT AUSTIN
GREAT STREETS. GREAT BRIDGES. GREAT CONNECTIONS. | Phases of Connection



EXISTING BARRIER



PHASE 1: CUT AND BRIDGE



PHASE 2: GAP